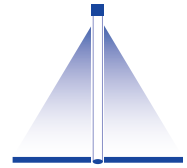


# ➤ Solid stream nozzles for air or saturated steam

## Series 544

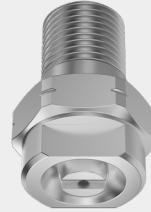


### Features:

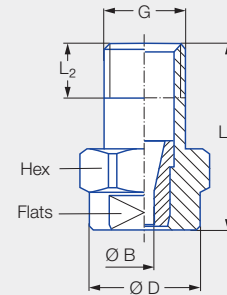
- Powerful, solid air stream
- Stainless steel version for higher ambient temperatures

### Applications:

- Targeted blowing off and blowing out



OSHA<sup>1</sup>



Series 544

<sup>1</sup> Meets OSHA specifications in terms of noise level.

Connection	G	Dimensions [in]					Weight [lbs]
		L <sub>1</sub>	L <sub>2</sub>	Ø D	Hex	Flats	
BA	1/8 NPT	0.87	0.26	0.51	14	9/16	0.03
BC	1/4 NPT	0.87	0.39	0.51	14	9/16	0.04

Ordering number				Bore diameter B [in]	V <sub>n</sub> air [SCFM]				Ṁ saturated steam [lb/hr]			
Type	Material number	Connection			p [psi]				p [psi]			
	16	Female			10	25	50	75	10	25	50	75
		1/8 NPT	1/4 NPT									
	Stainless steel 303	1/8 NPT	1/4 NPT									
544.360	●	BA	BC	0.04	0.5	0.6	0.9	1.3	1.1	2.4	5.8	5.0
544.400	●	BA	BC	0.05	0.6	1.0	1.6	2.3	2.4	5.6	8.3	8.4
544.480	●	BA	BC	0.05	0.8	1.4	2.1	3.0	3.6	6.1	9.0	13
544.560	●	BA	BC	0.07	1.2	2.2	3.5	4.8	5.3	8.2	13	19
544.640	●	BA	BC	0.08	2.1	3.4	5.5	7.7	9.5	15	22	32
544.720	●	BA	BC	0.10	3.8	5.7	9.7	13	15	20	32	45
544.800	●	BA	BC	0.13	5.9	9.1	15	20	21	33	54	75

Ordering Type + Material no. + Code = Ordering no.  
 example: 544.360 + 16 + BA = 544.360.16.BA



Assembly accessories can be found in Chapter 12 "Accessories".