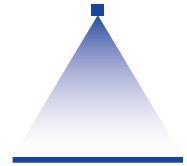


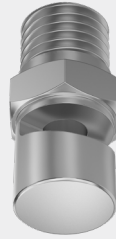
Flat fan tongue-type nozzles for air or saturated steam

Series 686



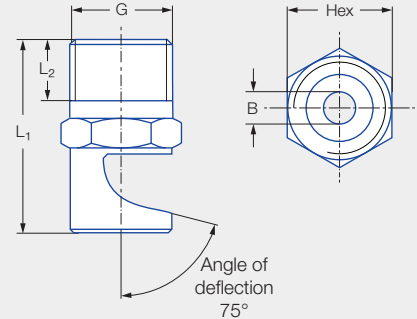
Features:

- Wide, powerful air stream
- Compact design
- Large spray width, also for short blowing distances
- Brass and stainless steel versions available for high ambient temperatures



OSHA¹

FDA²

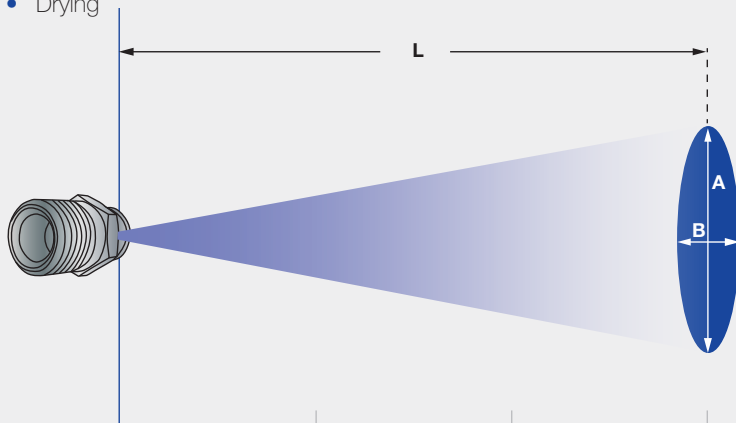


Applications:

- Blowing off liquids
- Cooling
- Heating
- Drying

Series 686

¹ Meets OSHA specifications in terms of noise level.
² Only applies to the stainless variant.



Jet pattern of series 686

Pressure		15 psi	45 psi	75 psi
686.408	Length L [in]	1.6	3.2	4.9
	A [in]	1.4	2	2.4
	B [in]	.6	1.6	2
686.528	Length L [in]	2.4	4.0	5.9
	A [in]	3	5.5	8.3
	B [in]	.8	1.6	2
686.608	Length L [in]	3.5	6.9	9.8
	A [in]	5.7	9.1	13.8
	B [in]	1	1.8	2.2

Pressure		15 psi	45 psi	75 psi
686.688	Length L [in]	6	15.8	20.7
	A [in]	9.1	22.1	29.1
	B [in]	1.6	3.2	3.9
686.728	Length L [in]	7.1	9.1	14.8
	A [in]	6.7	14.2	20.1
	B [in]	2	2	2.8

G	Dimensions [in]			Weight [lbs] (brass)
	L ₁	L ₂	Hex	
1/8 NPT	0.91	0.26	7/16	0.04

Spray angle	Angle of deflection	Ordering number				Bore diameter B [in]	V _n air [SCFM]				M saturated steam [lb/hr]			
		Type	Material number		Connection		p [psi]				p [psi]			
			16	30										
			Stainless steel 303	Brass			1/8 NPT	10	40	60	100	10	40	60
Approx. 27°–47°	75°	686.408	●	●	BA	0.039	0.4	0.8	1.1	1.7	1.8	3.5	4.6	6.6
	75°	686.488	●	●	BA	0.051	0.62	1.4	1.9	2.9	2.6	5.7	7.5	11
Approx. 70°	75°	686.528	●	●	BA	0.059	0.9	1.9	2.5	3.8	3.5	7.5	10	14
	75°	686.568	●	●	BA	0.067	1.0	2.4	3.4	5.0	4.6	10	13	19
	75°	686.608	●	●	BA	0.075	1.3	3.0	4.2	6.2	5.7	13	17	24
	75°	686.688	●	●	BA	0.094	2.2	4.7	6.6	9.9	9.0	20	26	37
	75°	686.728	●	●	BA	0.106	4.0	7.9	11	17	9.9	24	32	47
	75°	686.808	●	●	BA	0.134	6.1	13	18	27	16	39	50	74

Ordering Type + Material no. + Code = Ordering no.
 example: 686.408 + 16 + BA = 686.408.16.BA



Assembly accessories can be found in Chapter 12 "Accessories".