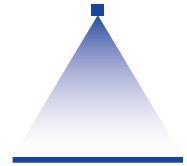


High pressure flat fan nozzles

Series 6FH with spray stabilizer



Features:

- Sharp, uniform flat fan spray
- Extremely narrow spray depth
- Nozzle with spray stabilizer
- Housing: Stainless steel 303, Insert: Hardened stainless steel 420F, spray stabilizer: Stainless steel 301

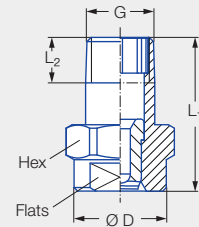
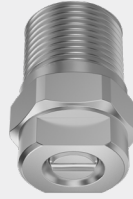


Figure 1

Applications:

- High pressure cleaning

Series 6FH

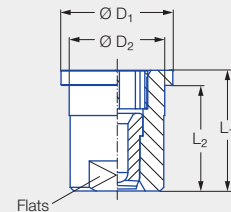
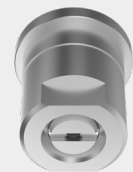


Figure 2

Figure	G	Dimensions [in]							Weight [lb]	p _{max} ¹ [psj]
		L ₁	L ₂	Ø D	Ø D ₁	Ø D ₂	Hex (mm)	Flats (mm)		
1	1/8 BSPT	0.87	0.26	0.51	–	–	14	10	0.03	approx. 10,153
1	1/8 NPT	0.87	0.26	0.51	–	–	14	10	0.03	approx. 10,153
1	1/4 BSPT	0.87	0.39	0.51	–	–	14	10	0.04	approx. 10,153
1	1/4 NPT	0.87	0.40	0.51	–	–	14	10	0.04	approx. 10,153
2	–	0.63	0.55	–	0.58	0.50	–	10	0.03	approx. 4,351

¹ Applies only to operation at constant pressure.

Series	Ordering number				Mat. No. A3 Stainless steel 303/420F/301	Equivalent bore diameter A [in]	V̇ water [gal/min]								
	Flow rate code						p [psi]								
	Spray angle						40	600	liters per minute 80 bar	1000	1500	2000	3000	4500	
	20°	30°	45°	60°											
6FH	361	362	363	364	●	0.039	0.20	0.77	4.08	1.00	1.22	1.41	1.73	2.12	
6FH	371	372	373	374	●	0.040	0.21	0.81	4.28	1.05	1.29	1.49	1.82	2.23	
6FH	381	382	383	384	●	0.043	0.25	0.97	5.10	1.25	1.53	1.77	2.16	2.65	
6FH	391	392	393	394	●	0.046	0.28	1.09	5.71	1.40	1.72	1.98	2.43	2.97	
6FH	401	402	403	404	●	0.047	0.30	1.16	6.11	1.50	1.84	2.12	2.60	3.18	
6FH	411	412	413	414	●	0.051	0.34	1.32	6.93	1.70	2.08	2.40	2.94	3.61	
6FH	441	442	443		●	0.052	0.38	1.47	7.75	1.90	2.33	2.69	3.29	4.03	
6FH	451	452	453	454	●	0.053	0.40	1.55	8.16	2.00	2.45	2.83	3.47	4.25	
6FH	461	462			●	0.054	0.43	1.67	8.77	2.15	2.63	3.04	3.72	4.56	
6FH	471	472	473	474	●	0.055	0.45	1.74	9.18	2.25	2.76	3.18	3.90	4.77	
6FH	481	482	483	484	●	0.061	0.50	1.94	10.20	2.50	3.06	3.54	4.33	5.30	
6FH	501	502	503	504	●	0.063	0.55	2.13	11.22	2.75	3.37	3.89	4.76	5.83	
6FH	521	522	523	524	●	0.068	0.60	2.32	12.24	3.00	3.67	4.24	5.20	6.36	

Series	Ordering number					Equivalent bore diameter A [in]	V̇ water [gal/min]							
	Flow rate code				Mat. No.		p [psi]							
	Spray angle						A3							
	20°	30°	45°	60°	Stainless steel 303/420F/301			40	600	liters per minute	1000	1500	2000	3000
										80 bar				
6FH	531	532	533	534		●	0.069	0.65	2.52	13.26	3.25	3.98	4.60	5.63
6FH	541	542	543	544	●	0.071	0.70	2.71	14.28	3.50	4.29	4.95	6.06	7.42
6FH	551	552	553	554	●	0.075	0.75	2.90	15.29	3.75	4.59	5.30	6.49	7.95
6FH	571	572	573	574	●	0.080	0.80	3.10	16.31	4.00	4.90	5.66	6.93	8.49
6FH	581	582	583	584	●	0.081	0.87	3.37	17.74	4.35	5.33	6.15	7.53	9.23
6FH	591	592	593	594	●	0.083	0.90	3.49	18.35	4.50	5.51	6.37	7.80	9.55
6FH	601	602	603	604	●	0.091	1.00	3.87	20.38	5.00	6.12	7.07	8.66	10.60
6FH	621*	622*	623*	624*	●	0.094	1.10	4.26	22.42	5.50	6.74	7.78	9.53	11.67
6FH	641*	642*	643*	644*	●	0.098	1.25	4.84	25.48	6.25	7.65	8.84	10.83	13.26
6FH	651*	652*	653*	654*	●	0.100	1.31	5.07	26.71	6.55	8.02	9.27	11.35	13.90
6FH	661*	662*	663*	664*	●	0.104	1.39	5.38	28.34	6.95	8.51	9.83	12.04	14.74
6FH	671*	672*	673*	674*	●	0.106	1.50	5.81	30.58	7.50	9.18	10.60	12.99	15.91
6FH	701*	702*	703*	704*	●	0.12	1.75	6.78	35.68	8.75	10.72	12.38	15.16	18.56
6FH			723*	724*	●	0.12	2.00	7.75	40.78	10.00	12.25	14.14	17.32	21.21
6FH			763*	764*	●	0.14	2.50	9.68	50.97	12.50	15.31	17.68	21.65	26.52
6FH			793*		●	0.15	3.00	11.62	61.16	15.00	18.37	21.21	25.98	31.82

* Only available with code CC, BC or 29.

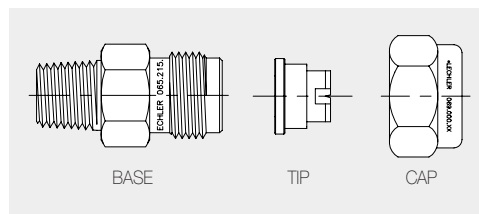
Code	Type of connection
CA	1/8 BSPT
BA	1/8 NPT
CC	1/4 BSPT
BC	1/4 NPT
29	Assembly with retaining nut 3/8 BSPP

Bases and Caps for Mounting

Inlet NPT Male	Outlet Male	Part No.	Standard Materials: 17 ¹ 316 SS 30 Brass
1/4" 3/8"	11/16 x 16 11/16 x 16	065. 215. XX. 10 065. 211. XX. 10	
1/4" 3/8"	3/8 BSPP 3/8 BSPP	065. 215. XX. 11 065. 215. XX. 12	
Caps			Other materials available. See Accessories beginning on page 127.
To fit 11/16x16 To fit 3/8 BSPP		069. 000. XX. 00 065. 200. XX. 00	

Ordering Type + Material no. + Code = Ordering no.
example: 6FH.404 + A3 + BA = 6FH.404.A3.BA

1) We reserve the right to deliver material 316 SS or 316L SS, if we show the material code 17.



Conversion formula for this series: $\dot{V}_2 = \dot{V}_1 \cdot \sqrt{\frac{p_2}{p_1}}$



Assembly accessories can be found in Chapter 12 "Accessories".

Ordering Series + Flow rate code + Material no. + Code = Ordering no.
example: 6FH + 541 + A3 + BA = 6FH.541.A3.BA