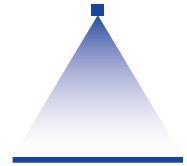


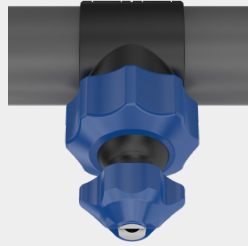
➤➤ Nozzle systems for surface treatment

Series 676/677 MEMOSPRAY



Features:

- Retention of the adjusted spray direction when changing nozzles
- Simple, quick nozzle assembly without the need for tools
- Many combination options
- Large range of flow rates, spray angles and materials



Applications:

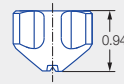
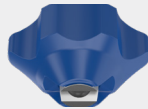
- Degreasing
- Phosphating in surface treatment
- Industrial cleaning
- Container washers

Assembly example



① a Flat fan nozzle

Incl. gasket 095.015.7A.05.65
(Material: Viton)

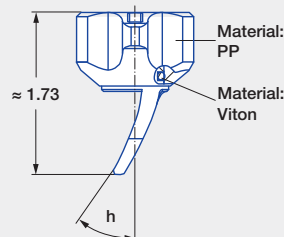
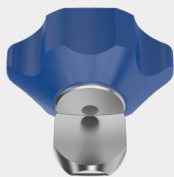


Designation	Spray angle	Ordering number				Narrowest free cross section Ø [in]	V̇ [gal/min]							Weight [lb]				
		Type	Material number				p [psi]							PP/Stainless steel 303	PP/Stainless steel 316L	PP/Ceramic	Polypropylene (PP)	
			8F	8R	E8		53	20	30	liters per minute 2 bar	40	60	80					100
① a Flat fan nozzle	30°	676.642.xx.40	●	●			0.06	1.10	1.07	4.00	1.55	1.90	2.19	2.45	0.03	0.03	-	-
		676.722.xx.40	●	●			0.08	1.38	1.69	6.30	1.95	2.39	2.76	3.09	0.03	0.03	-	-
		676.762.xx.40	●	●			0.09	1.75	2.15	8.00	2.48	3.04	3.51	3.92	0.03	0.03	-	-
		676.802.xx.40	●	●			0.10	2.19	2.69	10.00	3.10	3.80	4.39	15.81	0.03	0.03	-	-
		676.842.xx.40	●	●			0.12	2.74	3.36	12.50	3.88	4.75	5.48	6.13	0.03	0.03	-	-
		676.882.xx.40	●	●			0.13	3.51	4.30	16.00	4.96	6.08	7.02	7.85	0.03	0.03	-	-
		676.922.xx.40	●	●			0.16	4.39	5.37	20.00	6.20	7.60	8.77	9.81	0.03	0.03	-	-
		676.962.xx.40	●	●			0.17	5.48	6.72	25.00	7.76	9.50	10.97	12.26	0.03	0.03	-	-
	677.002.xx.40	●				0.19	6.91	8.46	31.50	9.77	11.97	13.82	15.45	0.03	-	-	-	
	60°	676.644.xx.40	●	●			0.06	1.10	1.07	4.00	1.55	1.90	2.19	2.45	0.03	0.03	-	-
		676.724.xx.40	●	●			0.08	1.38	1.69	6.30	1.95	2.39	2.76	3.09	0.03	0.03	-	-
		676.764.xx.40	●	●			0.09	1.75	2.15	8.00	2.48	3.04	3.51	3.92	0.03	0.03	-	-
		676.804.xx.40	●	●			0.10	2.19	2.69	10.00	3.10	3.80	4.39	15.81	0.03	0.03	-	-
		676.844.xx.40	●	●			0.12	2.74	3.36	12.50	3.88	4.75	5.48	6.13	0.03	0.03	-	-
		676.884.xx.40	●	●			0.13	3.51	4.30	16.00	4.96	6.08	7.02	7.85	0.03	0.03	0.02	0.02
		676.924.xx.40	●	●	●	●	0.16	4.39	5.37	20.00	6.20	7.60	8.77	9.81	0.03	0.03	0.02	0.02
		676.964.xx.40	●	●	●	●	0.17	5.48	6.72	25.00	7.76	9.50	10.97	12.26	0.03	0.03	0.02	0.02
		677.004.xx.40	●	●	●	●	0.19	6.91	8.46	31.50	9.77	11.97	13.82	15.45	0.03	0.03	0.02	0.02
		677.044.xx.40	●	●	●	●	0.22	8.77	10.75	40.00	12.41	15.20	17.55	19.62	0.03	0.03	-	-
		677.084.xx.40	●	●			0.24	10.97	13.43	50.00	15.51	19.00	21.94	24.52	0.03	0.03	-	-

Designation	Spray angle	Ordering number					Narrowest free cross section \varnothing [in]	\dot{V} [gal/min]							Weight [lb]			
		Type	Material number					p [psi]							PP/Stainless steel 303	PP/Stainless steel 316L	PP/Ceramic	Polypropylene (PP)
			8F	8R	E8	53		liters per minute	2 bar	40	60	80	100					
			Housing: PP Insert: 303 SS	Housing: PP Insert: 316L SS	Housing: PP Insert: Ceramic	Polypropylene (PP)								20				
① a Flat fan nozzle	90°	676.646.xx.40	●	●			0.06	1.10	1.07	4.00	1.55	1.90	2.19	2.45	0.03	0.03	-	-
		676.726.xx.40	●	●			0.08	1.38	1.69	6.30	1.95	2.39	2.76	3.09	0.03	0.03	-	-
		676.766.xx.40	●	●			0.09	1.75	2.15	8.00	2.48	3.04	3.51	3.92	0.03	0.03	-	-
		676.806.xx.40	●	●			0.10	2.19	2.69	10.00	3.10	3.80	4.39	15.81	0.03	0.03	-	-
		676.846.xx.40	●	●			0.12	2.74	3.36	12.50	3.88	4.75	5.48	6.13	0.03	0.03	-	-
		676.886.xx.40	●	●			0.13	3.51	4.30	16.00	4.96	6.08	7.02	7.85	0.03	0.03	-	-
		676.926.xx.40	●	●			0.16	4.39	5.37	20.00	6.20	7.60	8.77	9.81	0.03	0.03	-	-
	676.966.xx.40	●	●			0.17	5.48	6.72	25.00	7.76	9.50	10.97	12.26	0.03	0.03	-	-	
	120°	676.647.xx.40	●	●			0.06	1.10	1.07	4.00	1.55	1.90	2.19	2.45	0.03	0.03	-	-
		676.727.xx.40	●	●			0.08	1.38	1.69	6.30	1.95	2.39	2.76	3.09	0.03	0.03	-	-
		676.767.xx.40	●	●			0.09	1.75	2.15	8.00	2.48	3.04	3.51	3.92	0.03	0.03	-	-
		676.807.xx.40	●	●			0.10	2.19	2.69	10.00	3.10	3.80	4.39	15.81	0.03	0.03	-	-
		676.847.xx.40	●	●			0.12	2.74	3.36	12.50	3.88	4.75	5.48	6.13	0.03	0.03	-	-
		676.887.xx.40	●	●			0.13	3.51	4.30	16.00	4.96	6.08	7.02	7.85	0.03	0.03	-	-
676.927.xx.40		●	●			0.16	4.39	5.37	20.00	6.20	7.60	8.77	9.81	0.03	0.03	-	-	
Blind nozzle	-	067.630.8F.40.01	●			-	-	-	-	-	-	-	-	0.03	-	-	-	

① b Tongue-type nozzle

Incl. gasket 095.015.7A.05.65
(Material: Viton)



Designation	Spray angle	Deflection angle	Ordering number		Narrowest free cross section \varnothing [in]	\dot{V} [gal/min]					Weight [lb]		
			Type	Material number		p [psi]					PP/Stainless steel 316L	PVDF	
				8R		5E	liters per minute	2 bar	40	75			
				Housing: PP Insert: 316L SS		PVDF							20
① b Tongue-type nozzle	45°	35°	676.803.xx.41	●		0.13	2.19	2.69	10.00	3.10	4.25	0.05	-
	60°	35°	676.874.xx.41	●		0.17	3.29	4.03	15.00	4.65	6.37	0.05	-
	60°	35°	676.924.xx.41	●		0.19	4.39	5.37	20.00	6.20	8.50	0.05	-
	70°	40°	677.005.xx.41	●	●	0.24	6.91	8.46	31.50	9.77	13.38	0.05	0.02



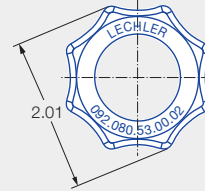
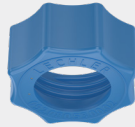
Ordering Type + Material no. = Ordering no.
example: 676.646.xx.40 + 8F = 676.646.8F.40

Conversion formula for this series: $\dot{V}_2 = \dot{V}_1 \cdot \sqrt{\frac{p_2}{p_1}}$



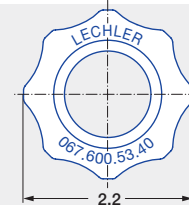
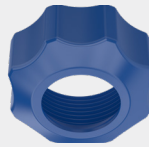
② a Split Eyelet/ Single Clamp retaining nut

092.080.xx.00.02



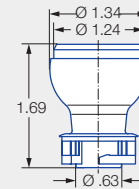
② b Eyelet Clamp Retaining Nut

067.600.xx.40



③ Split Eyelet/ Single Clamp Ball Base Bayonet

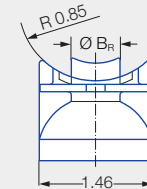
067.630.xx.40



④ a Eyelet Clamp Ball Seat

067.631.xx.40.x2

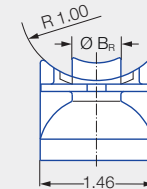
For eyelet clamp
067.631.xx.40.00



④ b Eyelet Clamp Ball Seat

067.631.xx.50.x2

For eyelet clamp
067.631.xx.50.00

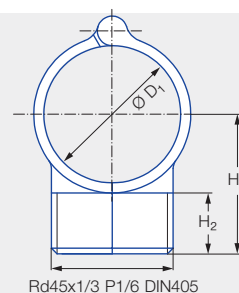


Designation	Ordering number		Ø B _R ¹ [in]	Recommended bore diameter [in]	Pipe Ø [in]	Weight [lb]	
	Type	Material number					
		53					6M
② a Retaining nut	092.080.xx.00.02	●		-	-	0.04	
② b Retaining nut	067.600.xx.40	●		-	-	0.04	
③ Ball bayonet base	067.630.xx.40	●		-	-	0.03	
④ a Ball seat for eyelet clamp no. 067.631.xx.40.00	067.631.xx.40.22		●	0.54	0.55 – 0.56	1 1/4" (1.57 – 1.69)	0.02
	067.631.xx.40.02		●	0.63	0.65 – 0.67	1 1/4" (1.57 – 1.69)	0.02
	067.631.xx.40.12		●	0.78	0.80 – 0.82	1 1/4" (1.57 – 1.69)	0.03
④ b Ball seat for eyelet clamp no. 067.631.xx.50.00	067.631.xx.50.22		●	0.54	0.55 – 0.56	1 1/2" (1.81 – 1.93)	0.02
	067.631.xx.50.02		●	0.63	0.65 – 0.67	1 1/2" (1.81 – 1.93)	0.02
	067.631.xx.50.12		●	0.78	0.80 – 0.82	1 1/2" (1.81 – 1.93)	0.03

¹ Ø B_R = spigot diameter.

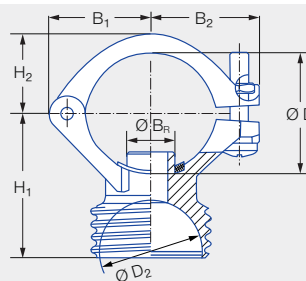
⑤ a Eyelet clamp

067.631.xx.x0.00



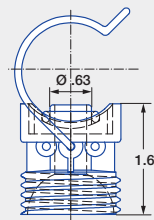
⑤ b Split Eyelet clamp

090.0x3.xx.4x.10



⑤ c Single clamp

092.08x.xx.00



Designation	Ordering number		Dimensions [in]							Ø B _R ¹ [in]	Recommended bore diameter [in]	Pipe Ø (Ø D) [in]	Weight [lb]
	Type	Material number	B ₁	B ₂	H ₁	H ₂	Ø D ₁	Ø D ₂	Polypropylene (PP)				
⑤ a Eyelet clamp	067.631.xx.40.00	●	–	–	1.88	0.87	1.69	–	–	–	–	1 1/4" (1.57 – 1.69)	0.07
	067.631.xx.50.00	●	–	–	2.03	0.87	1.99	–	–	–	–	1 1/2" (1.81 – 1.93)	0.07
⑤ b Split Eyelet clamp	090.023.xx.44.10	●	1.18	1.26	1.75	0.91	–	1.34	0.54	0.55 – 0.56	1" (1.26 – 1.36)	0.11	
	090.023.xx.43.10	●	1.18	1.26	1.75	0.91	–	1.34	0.63	0.65 – 0.67	1" (1.26 – 1.36)	0.11	
	090.033.xx.44.10	●	1.30	1.42	1.89	1.06	–	1.34	0.54	0.55 – 0.56	1 1/4" (1.57 – 1.69)	0.11	
	090.033.xx.43.10	●	1.30	1.42	1.89	1.06	–	1.34	0.63	0.65 – 0.67	1 1/4" (1.57 – 1.69)	0.11	
	090.033.xx.40.10	●	1.30	1.42	1.89	1.06	–	1.34	0.79	0.81 – 0.83	1 1/4" (1.57 – 1.69)	0.11	
	090.043.xx.44.10	●	1.42	1.38	2.05	1.18	–	1.34	0.54	0.55 – 0.56	1 1/2" (1.81 – 1.93)	0.11	
	090.043.xx.43.10	●	1.42	1.38	2.05	1.18	–	1.34	0.63	0.65 – 0.67	1 1/2" (1.81 – 1.93)	0.11	
⑤ c Single clamp	092.080.xx.00	●	–	–	–	–	–	–	0.64*	0.65 – 0.67	1" (1.26 – 1.36)	0.08	
	092.081.xx.00	●	–	–	–	–	–	–	0.64*	0.65 – 0.67	1 1/4" (1.57 – 1.69)	0.08	
	092.082.xx.00	●	–	–	–	–	–	–	0.64*	0.65 – 0.67	1 1/2" (1.81 – 1.93)	0.09	
	092.083.xx.00	●	–	–	–	–	–	–	0.64*	0.65 – 0.67	2" (2.28 – 2.44)	0.09	

* Other spigot diameters available on request.

¹ Ø B_R = spigot diameter.

Ordering Type + Material no. = Ordering no.
 example: 067.631.xx.40.00 + 53 = 067.631.53.40.00

Conversion formula for this series: $\dot{V}_2 = \dot{V}_1 \cdot \sqrt{\frac{p_2}{p_1}}$