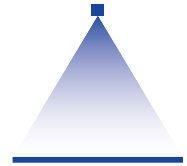


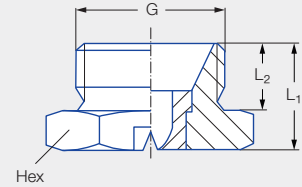
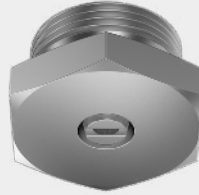
Low pressure flat fan nozzles

Series 616/617



Features:

- Uniform, parabolic liquid distribution
- Stable spray angle
- Compact design for narrow installation conditions



Series 616/617

Applications:

- Spray cleaning
- Surface cleaning
- Filter cleaning
- Coating processes
- Belt cleaning
- Lubrication processes

G	Dimensions [mm]			Weight [in] Brass
	L ₁	L ₂	Hex (mm)	
3/4 BSPP	0.75	0.47	32	0.17

Spray angle	Ordering number				Equivalent bore diameter A [in]	Narrowest free cross section Ø [in]	V̇ water [gal/min]										Spray width B [in] (at p = 75 psi)	
	Type	Material number					p [psi]											
		16	17 ¹	30								liters per minute			H = 10 [in]	H = 20 [in]		
		Stainless steel 303	Stainless steel 316Ti/ Stainless steel 316L	Brass			7	15	30	45	75	5 bar	100	145				
20°	616.721	●	●	●	0.12	0.10	0.82	1.20	1.69	2.07	2.68	9.96	3.09	3.72	4	7		
	616.801	●	●	●	0.16	0.13	1.30	1.90	2.69	3.29	4.25	15.81	4.90	5.91	4	7		
	616.881	●	●	●	0.20	0.16	2.08	3.04	4.30	5.26	6.80	25.30	7.85	9.45	4	7		
	616.921	●	●	●	0.22	0.17	2.60	3.80	5.37	6.58	8.49	31.62	9.81	11.81	4	7		
	616.961	●	●	●	0.24	0.20	3.24	4.75	6.72	8.23	10.62	39.53	12.26	14.77	4	7		
30°	616.722	●	●	●	0.12	0.10	0.82	1.20	1.69	2.07	2.68	9.96	3.09	3.72	6	10		
	616.762	●	●	●	0.14	0.11	1.04	1.52	2.15	2.63	3.40	12.65	3.40	4.73	6	10		
	616.802	●	●	●	0.16	0.12	1.30	1.90	2.69	3.29	4.25	15.81	4.90	5.91	6	10		
	616.882	●	●	●	0.20	0.16	2.08	3.04	4.30	5.26	6.80	25.30	7.85	9.45	6	11		
	616.922	●	●	●	0.22	0.17	2.60	3.80	5.37	6.58	8.49	31.62	9.81	11.81	6	11		
616.962	●	●	●	0.24	0.20	3.24	4.75	6.72	8.23	10.62	39.53	12.26	14.77	6	11			
45°	616.723	●	●	●	0.12	0.09	0.82	1.20	1.69	2.07	2.68	9.96	3.09	3.72	9	17		
	616.763	●	●	●	0.14	0.10	1.04	1.52	2.15	2.63	3.40	12.65	3.40	4.73	9	17		
	616.803	●	●	●	0.16	0.12	1.30	1.90	2.69	3.29	4.25	15.81	4.90	5.91	9	17		
	616.843	●	●	●	0.18	0.13	1.62	2.37	3.36	4.11	5.31	19.76	6.13	7.38	9	17		
	616.883	●	●	●	0.20	0.15	2.08	3.04	4.30	5.26	6.80	25.30	7.85	9.45	9	17		
	616.923	●	●	●	0.22	0.165	2.60	3.80	5.37	6.58	8.49	31.62	9.81	11.81	9	17		
	616.963	●	●	●	0.24	0.17	3.24	4.75	6.72	8.23	10.62	39.53	12.26	14.77	9	17		

¹ We reserve the right to supply material 316Ti or 316L under material no. 17.
Available in NPT upon request

Spray angle	Ordering number				Equivalent bore diameter A [in]	Narrowest free cross section Ø [in]	V̇ water [gal/min]								Spray width B [in] (at p = 75 psi)			
	Type	Material number					p [psi]										H = 10 [in]	H = 20 [in]
		16	17 ¹	30			7	15	30	45	75	liters per minute	100	145				
		Stainless steel 303	Stainless steel 316Ti/ Stainless steel 316L	Brass											5 bar			
60°	616.724	●	●	●	0.12	0.08	0.82	1.20	1.69	2.07	2.68	9.96	3.09	3.72	11	22		
	616.764	●	●	●	0.14	0.09	1.04	1.52	2.15	2.63	3.40	12.65	3.40	4.73	11	22		
	616.804	●	●	●	0.16	0.10	1.30	1.90	2.69	3.29	4.25	15.81	4.90	5.91	11	23		
	616.844	●	●	●	0.18	0.12	1.62	2.37	3.36	4.11	5.31	19.76	6.13	7.38	11	23		
	616.884	●	●	●	0.20	0.13	2.08	3.04	4.30	5.26	6.80	25.30	7.85	9.45	11	23		
	616.924	●	●	●	0.22	0.16	2.60	3.80	5.37	6.58	8.49	31.62	9.81	11.81	11	23		
	616.964	●	●	●	0.24	0.17	3.24	4.75	6.72	8.23	10.62	39.53	12.26	14.77	11	23		
	617.044	●		●	0.31	0.22	5.19	7.59	10.74	13.15	16.98	63.20	19.61	23.61	11	23		
617.124			●	0.39	0.29	8.17	11.97	16.92	20.73	26.76	99.60	30.90	37.21	11	23			
90°	616.726	●	●	●	0.12	0.07	0.82	1.20	1.69	2.07	2.68	9.96	3.09	3.72	20	39		
	616.766	●	●	●	0.14	0.075	1.04	1.52	2.15	2.63	3.40	12.65	3.40	4.73	21	39		
	616.806	●	●	●	0.16	0.09	1.30	1.90	2.69	3.29	4.25	15.81	4.90	5.91	21	41		
	616.846	●	●	●	0.18	0.09	1.62	2.37	3.36	4.11	5.31	19.76	6.13	7.38	21	41		
	616.886	●	●	●	0.20	0.12	2.08	3.04	4.30	5.26	6.80	25.30	7.85	9.45	21	42		
	616.926	●	●	●	0.22	0.14	2.60	3.80	5.37	6.58	8.49	31.62	9.81	11.81	21	42		
	616.966	●	●	●	0.24	0.15	3.24	4.75	6.72	8.23	10.62	39.53	12.26	14.77	21	42		
120°	616.727	●	●	●	0.12	0.06	0.82	1.20	1.69	2.07	2.68	9.96	3.09	3.72	35	66		
	616.767	●	●	●	0.14	0.07	1.04	1.52	2.15	2.63	3.40	12.65	3.40	4.73	35	67		
	616.807	●	●	●	0.16	0.08	1.30	1.90	2.69	3.29	4.25	15.81	4.90	5.91	35	67		
	616.887	●	●	●	0.20	0.10	1.62	2.37	3.36	4.11	5.31	19.76	6.13	7.38	36	67		
	616.927	●	●	●	0.22	0.11	2.60	3.80	5.37	6.58	8.49	31.62	9.81	11.81	36	67		
	616.967			●	0.24	0.13	3.24	4.75	6.72	8.23	10.62	39.53	12.26	14.77	36	67		
	617.047			●	0.31	0.17	5.19	7.59	10.74	13.15	16.98	63.20	19.61	23.61	36	67		

¹ We reserve the right to supply material 316Ti or 316L under material no. 17.
Available in NPT upon request

Conversion formula for this series: $\dot{V}_2 = \dot{V}_1 \cdot \sqrt{\frac{p_2}{p_1}}$

Ordering Type + Material no. = Ordering no.
example: 616.724 + 16 = 616.724.16



Assembly accessories can be found in Chapter 12 "Accessories".