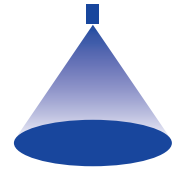


# ➤ Axial-flow full cone nozzles Series 403

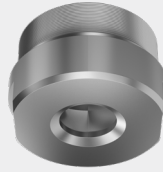


### Features:

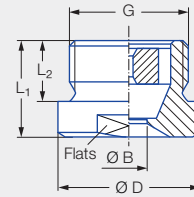
- Extremely uniform liquid distribution

### Applications:

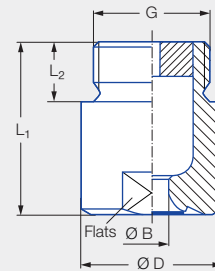
- Surface spraying
- Spraying over packings
- Chemical process engineering
- Cleaning and washing processes
- Cooling



Series 403



90° version



120° version

### 90° version

Type	G	Dimensions [in]				Weight [lb]
		L <sub>1</sub>	L <sub>2</sub>	Ø D	Flats (mm)	
403.446/403.486	2 1/2 NPT	2.05	1.06	3.27	75	2.87
403.526	3 NPT	2.36	1.18	3.86	85	4.41
403.606	3 1/2 NPT	2.76	1.26	4.65	105	7.94

### 120° version

Type	G	Dimensions [in]				Weight [lb]
		L <sub>1</sub>	L <sub>2</sub>	Ø D	Flats (mm)	
403.448/403.488	2 1/2 NPT	4.88	1.06	3.27	75	7.05
403.528	3 NPT	6.02	1.18	3.86	85	11.91
403.608	3 1/2 NPT	6.14	1.26	4.65	105	18.30
403.628	4 NPT	6.50	1.42	5.04	110	21.16

Spray angle	Ordering number		Bore diameter B [in]	Narrowest free cross sections Ø [in]	V̇ water [gal/min]								Spray diameter D [in] (at p = 30 psi)	
	Type	Mat. no.			p [psi]								 H = 20 [in]    H = 40 [in]	
		1Y			Liters per min. 2 bar									
					Stainless steel 316L	5	7	15	30	45	60	75		
90°	403.446	●	5.6	2.7	52.30	59.84	81.17	107.10	400	125.96	141.32	154.51	39	70
	403.486	●	6.6	2.7	65.38	74.80	101.46	133.88	500	157.45	176.65	193.14	39	70
	403.526	●	7.2	3.1	82.38	94.25	127.84	168.68	630	198.38	222.58	243.36	39	70
	403.606	●	9.0	3.4	130.76	149.60	202.92	267.75	1,000	314.90	353.30	386.28	39	70
120°	403.448	●	5.7	2.2	52.30	59.84	81.17	107.10	400	125.96	141.32	154.51	67	115
	403.488	●	6.6	2.5	65.38	74.80	101.46	133.88	500	157.45	176.65	193.14	67	115
	403.528	●	7.2	3.4	82.38	94.25	127.84	168.68	630	198.38	222.58	243.36	67	115
	403.608	●	9.4	2.7	130.76	149.60	202.92	267.75	1,000	314.90	353.30	386.28	67	115
	403.628	●	10.1	3.4	163.45	187.00	253.65	324.69	1,250	393.62	441.62	482.86	67	115

Also available in BSPP metric thread.

Conversion formula for this series:  $\dot{V}_2 = \dot{V}_1 \cdot \left(\frac{p_2}{p_1}\right)^{0.4}$   
(≤ 10 bar)

Ordering Type + Material no. = Ordering no.  
example: 403.446 + 1Y = 403.446.1Y



Assembly accessories can be found in Chapter 12 "Accessories".