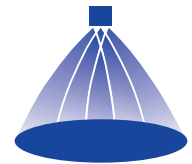
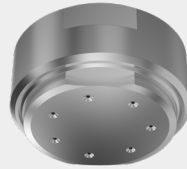


# Cluster head nozzles Series 502/503

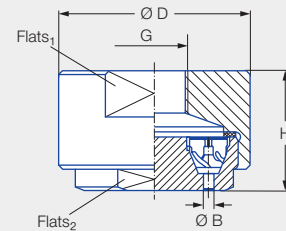
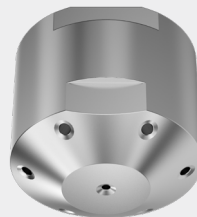


## Features:

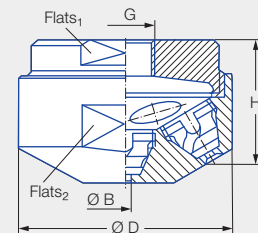
- Fine, uniform atomization
- Stable spray angle
- Space-saving installation
- Maintenance-friendly design
- High temperature and chemical resistance



Series 502/503



70° version



130° version

## Applications:


- Chlorine precipitation
- Absorption
- Dust suppression
- Degassing of liquids
- Desuperheating

70° version

G	Dimensions [in]				Weight [lb] (brass)
	H	Ø D	Flats <sub>1</sub> (mm)	Flats <sub>2</sub> (mm)	
1/2 NPT	0.98	1.97	46	38	0.55
3/4 NPT	1.81	2.95	65	55	1.92

130° version

G	Dimensions [in]				Weight [lb] (brass)
	H	Ø D	Flats <sub>1</sub> (mm)	Flats <sub>2</sub> (mm)	
1/2 NPT	1.10	1.57	27	36	0.33
3/4 NPT	2.09	2.36	50	55	0.90


Spray angle	Ordering number					Bore diameter B [in]	Narrowest free cross sections Ø [in]	V̇ water [gal/min]						Spray diameter D [in] (at p = 30 psi)	
	Type	Mat. no.		Connection				p [psi]							
		17 <sup>1</sup>	30	1/2 NPT	3/4 NPT			Liters per min.		bar		75	145		
		Stainless steel 316Ti/ Stainless steel 316L	Brass					7	15	30	2			7.5	
70°	502.445		●	BH		0.035	0.020	–	–	0.34	1.25	0.53	0.74	10	14
	502.985	●		BL		0.130	0.079	3.63	5.32	7.52	28.00	11.89	16.54	24	39
	503.065	●		BL		0.193	0.079	5.84	8.55	12.09	45.00	19.12	26.58	36	60
	503.115	●	●	BL		0.236	0.079	7.79	11.40	16.12	60.00	25.49	35.44	51	78
130°	502.448	●	●	BH		0.035	0.020	–	–	0.34	1.25	0.53	0.74	12	14
	502.548	●	●	BH		0.071	0.020	–	0.43	0.60	2.24	0.95	1.32	18	22
	502.588	●	●	BL		0.039	0.039	0.36	0.53	0.75	2.80	1.19	1.65	32	35
	502.748	●	●	BL		0.075	0.079	0.92	1.35	1.91	7.10	3.02	4.19	43	55
	502.798	●	●	BL		0.114	0.079	1.23	1.80	2.55	9.50	4.04	5.61	47	51
	502.838	●	●	BL		0.114	0.079	1.53	2.24	3.17	11.80	5.01	6.97	59	81
	502.908	●	●	BL		0.157	0.079	2.34	3.42	4.84	18.00	7.65	10.63	70	104
	503.028	●	●	BL		0.165	0.079	4.61	6.74	9.54	35.50	15.08	20.97	81	124
	503.118	●	●	BL		0.256	0.079	7.79	11.40	16.12	60.00	25.49	35.44	91	140

<sup>1</sup> We reserve the right to supply material 316Ti or 316L under material no. 17.

Also available in metric thread.

Conversion formula for this series:  $\dot{V}_2 = \dot{V}_1 \cdot \sqrt{\frac{p_2}{p_1}}$

Ordering Type + Material no. + Connection = Ordering no.  
example: 502.445 + 30 + BH = 502.445.30.BH

 Assembly accessories can be found in Chapter 12 "Accessories".