



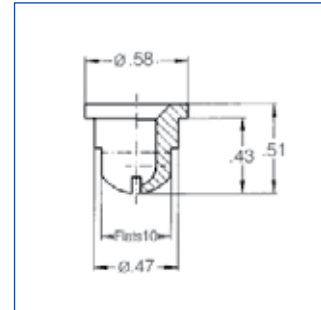
Flat fan nozzles for air or saturated steam


Series 679

Particularly wide-angle, powerful air jet. Assembling with retaining nut. Easy nozzle changing. Simple jet alignment.

Applications:

Blowing off liquids, cooling, reheating, drying.

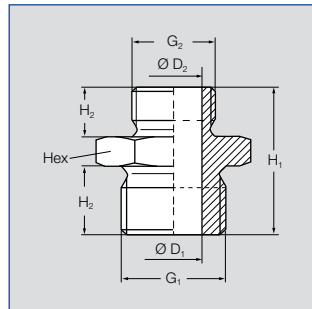


Spray angle 	Ordering no.			Equivalent Orifice diam. [in]	$V_n L = \text{Air [SCFM]}$							
	Type	Mat. no.			$MS = \text{Saturated Steam [lb/h]}$							
		17'	5E		$p \text{ [psi]}$							
		AISI 316Ti/ AISI 316L	PVDF		0.5		2.0		5.0		10.0	
				L	S	L	S	L	S	L	S	
ca. 70°	679. 085	○	○	.051	1.2	3.5	2.4	6.8	2.8	6.1	8.7	13.5
	679. 117	○	○	.059	1.2	3.8	2.5	7.3	2.9	6.5	9.1	14.3
	679. 165	○	○	.071	1.5	4.4	3.0	9.0	3.6	8.0	11.1	17.6
	679. 255	○	○	.083	2.1	6.2	4.3	12.6	5.0	11.2	15.7	24.7
	679. 365	○	○	.110	3.7	11.0	7.5	22.1	8.8	19.6	27.4	43.2
	679. 415	○	○	.142	6.0	17.6	11.9	35.3	14.1	31.4	43.9	69.2
	679. 495	○	○	.169	9.2	27.3	18.3	54.7	21.6	48.5	67.1	106.9

A = Equivalent bore diameter

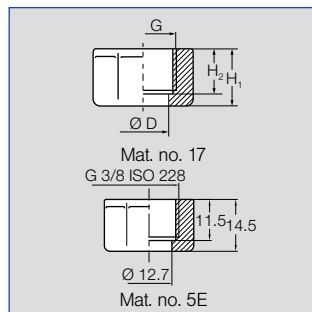
Example of ordering:	Type	+	Material no.	=	Ordering no.
	679. 085	+	17	=	679. 085. 17

Double nipple



Type	Ordering no.		Dimensions [mm]							Weight
	Mat. no.		G ₁ NPT	G ₂ NPT	H ₁	H ₂	D ₁	D ₂	Hex	
	17'	5E								
	AISI 316Ti/ AISI 316L	PVDF								
065. 215	○	○	3/8 A	1/4 A	.98	.40	.40	.28	22	.063 lb
065. 211	○	○	3/8 A	3/8 A	.98	.40	.45	-	22	.052 lb

Nuts



Type	Ordering no.		Dimensions [mm]					Weight
	Mat. no.		G NPT	H ₁	H ₂	D	Hex	
	17'	5E						
	AISI 316Ti/ AISI 316L	PVDF						
065. 200	○	-	3/8	.512	.394	.504	22	.052 lb
065. 200	-	○	3/8	.571	.453	.504	22	.052 lb