

Low pressure solid stream nozzles

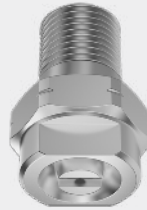
Series 544

Properties:

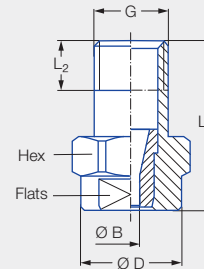
- Concentrated solid stream jet
- High impact

Applications:

- Cleaning and washing processes
- Injection
- Targeted cooling
- Pasteurization



Series 544



Code	G	Dimensions [in]					Weight [lb] (Brass)
		L ₁	L ₂	Ø D	Hex	Flats	
BA	1/8 NPT	0.87	0.26	0.51	9/16	10	0.03
BC	1/4 NPT	0.87	0.39	0.51	9/16	10	0.04

Type	Ordering no.		Bore diameter B [in]	V̇ water [gal/min]													
	Mat. no.			Code		p [psi]											
	16	30		1/8 NPT	1/4 NPT	7	15	30	45	60	Liters per min.	145	200	300	435		
	Stainless steel 303	Brass									5 bar						
544.110	●	●	BA	BC	0.009	0.005	0.007	0.010	0.012	0.014	0.06	0.022	0.026	0.032	0.039		
544.160	●		BA	BC	0.013	0.007	0.011	0.015	0.019	0.022	0.09	0.034	0.039	0.048	0.058		
544.200	●	●	BA	BC	0.015	0.013	0.019	0.027	0.033	0.038	0.16	0.060	0.070	0.086	0.104		
544.240	●		BA	BC	0.020	0.02	0.03	0.04	0.05	0.06	0.25	0.09	0.11	0.13	0.16		
544.280	●		BA	BC	0.025	0.03	0.05	0.07	0.08	0.10	0.40	0.15	0.18	0.21	0.26		
544.320	●	●	BA	BC	0.031	0.05	0.08	0.11	0.13	0.15	0.63	0.24	0.28	0.34	0.41		
544.360	●	●	BA	BC	0.041	0.08	0.12	0.17	0.21	0.24	1.00	0.37	0.44	0.54	0.65		
544.400	●	●	BA	BC	0.051	0.13	0.19	0.27	0.33	0.38	1.58	0.59	0.69	0.85	1.02		
544.480	●	●	BA	BC	0.052	0.21	0.30	0.43	0.52	0.61	2.53	0.94	1.11	1.36	1.64		
544.560	●	●	BA	BC	0.065	0.32	0.47	0.67	0.82	0.95	3.95	1.48	1.73	2.12	2.56		
544.640	●	●	BA	BC	0.082	0.52	0.76	1.07	1.32	1.52	6.32	2.36	2.77	3.40	4.09		
544.720	●	●	BA	BC	0.105	0.82	1.20	1.69	2.07	2.39	9.96	3.72	4.37	5.35	6.44		
544.800	●	●	BA	BC	0.130	1.30	1.90	2.69	3.29	3.80	15.81	5.91	6.94	8.49	10.23		

Conversion formula for this series: $\dot{V}_2 = \dot{V}_1 \cdot \sqrt{\frac{p_2}{p_1}}$

Ordering Type + Material no. + Code = Ordering no.
example: 544.110 + 16 + BA = 544.110.16.BA



Assembly accessories can be found in Chapter 12 "Accessories".