

Flushing Nozzle Assembly

Series 597 Lauter Tun

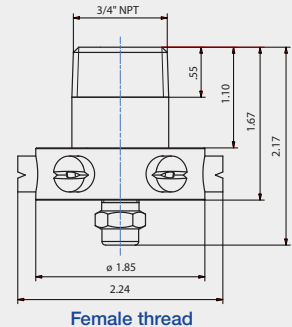


Features:

- Designed for cleaning the plate screen in lauter tun tanks
- Threaded connection



Series 597



Technical data:



Maximum operating temperature
203 °F



Maximum ambient temperature
392 °F



Installation
Vertically facing upward



Bearing
Static – no bearing



Material
Stainless steel 304 SS,
PTFE



Weight
.20 lb



Surface quality
 $Ra \leq 0.4 \mu m$
OUTSIDE



Surface quality
 $Ra \leq 0.8 \mu m$
INSIDE



Steam suitability
Suitable for short term



Insertion diameter
2.24 in



Recommended filter
Line strainer with a mesh
size of 0.3 mm/50 mesh



Recommended operating pressure
45 psi

Ordering number		V̇ water [gal/min]				
Type	Connection	p [psi]				
	3/4" Female NPT	20	30	Liters per min. 2 bar	45	60
597.085.1C	BK	4.83	5.91	22	7.24	8.36

*Nozzle 490.568.1Y.BA is used in this assembly

Information on operation

- Operation with compressed air purge only for short-term usage. Operation above the recommended operating pressure means higher wear and smaller droplets. This might have adverse effects on the cleaning result.