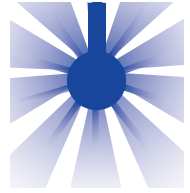


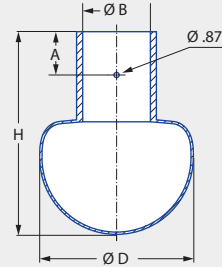
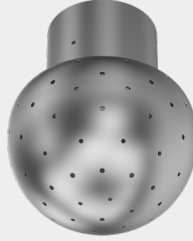
Static spray balls RinseClean

Series 5B2/5B3



Features:

- No moving parts
- Self-draining
- Proven use in many applications
- Suitable for very high temperatures and hygienic requirements



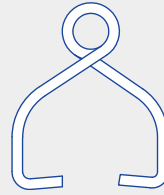
Dimension of the slip-on connection according to DIN 10357, Series B

Series 5B2/5B3

With the slip-on connection, the spray ball is pushed onto the customer's connection pipe and secured with the supplied Pin.



Pin 1



Pin 2-5

	Max. tank diameter [ft]	0	5	10	15	20	25	30	35	40	45
		(This row is highlighted in red in the original image)									

Technical data:



Maximum operating temperature
392 °F



Maximum ambient temperature
482 °F



Installation
Operation in every installation position



Bearing
Static – no bearing



Material
Stainless steel 1.4404 (316L), cotter pin made of stainless steel 1.4404 (316L) or 2.4602 (Alloy 22), cotter pin made of 2.4602 (Alloy 22)



Weight
.02–.66 lbs



Surface quality
Ra ≤ 0.8 µm
OUTSIDE polished Ra ≤ 0.5 µm



Surface quality
Ra ≤ 0.8 µm
INSIDE



Steam suitability
Suitable



Insertion diameter
.79–3.54 in



Recommended filter
Smaller than the narrowest cross-section



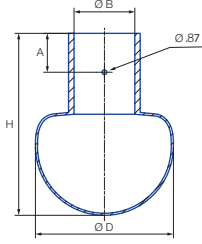
Recommended operating pressure
30 psi

Function video
www.lechler.com/staticsprayball
Or scan the QR code.





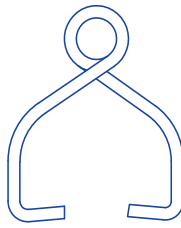
Slip-on connection



Dimensions slip-on connection according to DIN 10357 Series D (ASME BPE 1997.00 tube compatible)




Pin 1



Pin 2-5

Pin	Ordering no.
1	095.013.1Y.06.55
2	095.013.1Y.06.58
3	095.013.1Y.06.56
4	095.013.1Y.06.59
5	095.013.1Y.06.57

With the slip-on connection, the spray ball is pushed onto the customer's connection pipe and secured with the supplied cotter pin.

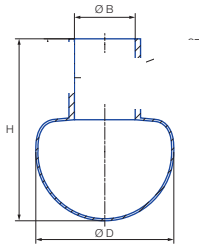
Spray angle	Ordering number	Type	Narrowest free cross section Ø [in]	V̇ water [gal/min]					Dimensions [in]				Pin	Max. tank diameter [ft]
				p [psi] (p _{max} = 75 psi)					Distance to bore A	Connection B	Height H	Ø D		
				7	15	30	Liters per min. 2 bar	45						
360° 	5B3.089.1Y.A1.00		0.04	6.49	9.50	13.43	50	16.45	0.35	0.48	1.65	1.10	1	7
	5B3.209.1Y.A1.90		0.06	12.98	19.00	26.87	100	32.90	0.35	0.72	1.65	1.10	1	8
	5B3.309.1Y.A2.90		0.07	23.36	34.19	48.36	180	59.32	0.71	0.87	3.31	2.52	2	11
	5B3.379.1Y.A2.60		0.08	33.74	49.39	69.85	260	85.55	0.71	1.11	3.31	2.52	3	17
	5B3.449.1Y.A3.80		0.12	53.21	77.89	110.15	410	134.90	0.71	1.11	3.31	2.52	3	18
	5B3.539.1Y.A5.10		0.13	86.95	127.28	180.00	670	220.45	0.98	2.06	4.37	3.54	5	18


Spray balls with other spray angles and connection options (various slip-on connections as well as threaded and welded connections) can be found in our brochure "Precision nozzles for tank and equipment cleaning".

Information about slip-on connections

- Stainless steel 316L pin supplied.
- Depending on the diameter of the adapter, the flow rate can increase due to a leakage between the adapter and the spray ball.

Threaded connection



Spray angle	Ordering number	Type	Connection ØB Female NPT	Narrowest free cross section Ø [in]	V̇ water [gal/min]					Dimensions (in)		Pin	Max. tank diameter [ft]
					p [psi] (p _{max} = 75 psi)					Height H	Ø D		
					7	15	30	Liters per min. 2 bar	45				
360° 	5B2.879.1Y.BB		1/8"	0.03	1.95	2.85	4.03	15	4.94	1.46	0.79	1	6
	5B3.309.1Y.BH		1/2"	0.07	23.36	34.19	48.36	180	59.23	3.31	2.52	2	11
	5B3.379.1Y.BN		1"	0.08	33.74	49.39	69.85	260	85.55	3.31	2.52	3	17
	5B3.539.1Y.BW		2"	0.13	86.95	127.28	180.00	670	220.45	4.37	3.54	5	18

The maximum tank diameter applies to the recommended operating pressure and is meant as a recommendation only. The cleaning result is also affected by the type of soiling.