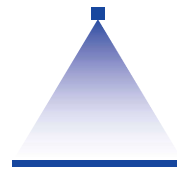


Threaded Disc type tips

Series 680



Features:

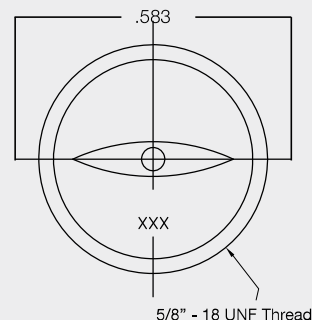
- Excellent for inexpensive headers with minimal clearance
- Orifices thread directly into pipe wall without any protrusion

Applications:

- Belt washing
- Web coating
- Spray washing of products on conveyors



Series 680



Spray angle at 40psi	Ordering number		Bore diameter (in.)	V̇ water [gal/min]								
	Type	Material 316 SS 17 ¹		p [psi]								
		17 ¹		10 psi	20 psi	30 psi	liters per minute 2 bar	40 psi	60 psi	80 psi	100 psi	150 psi
35°	680. 402	●	.046	-	0.22	0.27	1.00	0.31	0.38	0.44	0.49	0.60
	680. 492	●	.062	0.26	0.37	0.46	1.70	0.53	0.65	0.75	0.83	1.02
	680. 572	●	.076	0.40	0.57	0.70	2.60	0.81	0.99	1.14	1.28	1.56
	680. 712	●	.111	0.92	1.29	1.59	5.90	1.83	2.24	2.59	2.89	3.54
	680. 752	●	.125	1.19	1.69	2.07	7.70	2.39	2.93	3.38	3.78	4.63
	680. 872	●	.187	2.33	3.29	4.03	15.0	4.65	5.70	6.58	7.36	9.01
50°	680. 403	●	.046	-	0.22	0.27	1.00	0.31	0.38	0.44	0.49	0.60
	680. 493	●	.062	0.26	0.37	0.46	1.70	0.53	0.65	0.75	0.83	1.02
	680. 573	●	.076	0.40	0.57	0.70	2.60	0.81	0.99	1.14	1.28	1.56
	680. 713	●	.111	0.92	1.29	1.59	5.90	1.83	2.24	2.59	2.89	3.54
	680. 813	●	.156	1.61	2.28	2.79	10.4	3.23	3.95	4.56	5.10	6.25
	680. 873	●	.187	2.33	3.29	4.03	15.0	4.65	5.70	6.58	7.36	9.01
	680. 953	●	.218	3.52	4.98	6.10	22.7	7.04	8.62	9.96	11.13	13.64
	680. 993	●	.250	4.73	6.69	8.19	30.5	9.46	11.59	13.38	14.96	18.32
65°	680. 374**	●	.040	-	-	0.21	0.80	0.25	0.30	0.35	0.39	0.48
	680. 404	●	.046	-	0.22	0.28	1.00	0.32	0.40	0.47	0.52	0.65
	680. 494	●	.062	0.26	0.37	0.46	1.70	0.53	0.65	0.75	0.83	1.02
	680. 574*	●	.076	0.40	0.57	0.70	2.60	0.81	0.99	1.14	1.28	1.56
	680. 714	●	.111	0.92	1.29	1.59	5.90	1.83	2.24	2.59	2.89	3.60
	680. 754**	●	.125	1.19	1.69	2.07	7.70	2.39	2.93	3.38	3.78	4.40
	680. 814**	●	.156	1.61	2.28	2.79	10.4	3.23	3.95	4.56	5.10	6.25
	680. 874	●	.187	2.33	3.29	4.03	15.0	4.65	5.70	6.58	7.36	9.01
	680. 954	●	.218	3.52	4.98	6.10	22.7	7.04	8.62	9.96	11.13	13.64
80°	680. 345	●	.031	-	-	-	-	0.16	0.19	0.22	0.25	0.30
	680. 405***	●	.046	-	0.22	0.28	1.00	0.32	0.40	0.47	0.52	0.65
	680. 495	●	.062	0.26	0.37	0.46	1.70	0.53	0.65	0.75	0.83	1.02
	680. 575	●	.076	0.40	0.57	0.70	2.60	0.81	0.99	1.14	1.28	1.56
	680. 655	●	.093	0.65	0.92	1.13	4.20	1.30	1.60	1.84	2.06	2.52
	680. 715	●	.111	0.92	1.29	1.59	5.90	1.83	2.24	2.59	2.89	3.60
	680. 755	●	.125	1.19	1.69	2.07	7.70	2.39	2.93	3.38	3.78	4.40
	680. 815	●	.156	1.61	2.28	2.79	10.4	3.23	3.95	4.56	5.10	6.25
	680. 875	●	.187	2.33	3.29	4.03	15.0	4.65	5.70	6.58	7.36	9.01

¹ We reserve the right to supply material 316Ti or 316L under material no. 17.

Tungsten carbide available upon request

* 60° spray angle

** 70° spray angle

*** 75° spray angle

Conversion formula for this series: $\dot{V}_2 = \dot{V}_1 \cdot \sqrt{\frac{p_2}{p_1}}$

Ordering	Type	+	Material code	=	Ordering no.
example:	680. 873	+	17	=	680. 873. 17

Assembly accessories can be found in Chapter 12 "Accessories".