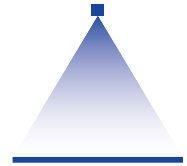


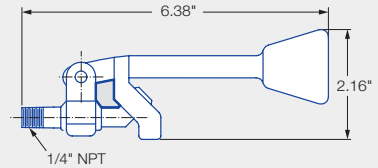
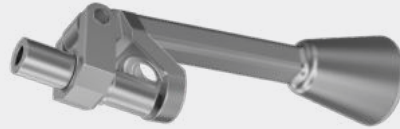
Easy Flush foam control nozzles

Series 564



Features:

- Efficient flat fan spray
- Quick removal without complete nozzle replacement
- Reduced clogging due to larger free passage
- Reduced pumping costs due to low pressure liquid flow



Series 564

Applications:

- Foam control in aeration tanks

Spray angle	Ordering number Connection: 1/4 " NPT Material: 316SS	Stamp	V̇ water [gal/min]						
			Pressure psi	Flow rate gpm	p [psi]				
					Width of spray coverage at elevation of nozzle above water line				
			12"	18"	24"	30"	36"		
90°	564. 846. 17. BC	1	3	1.1	22"	30"	39"	46"	54"
			5	1.4	25"	35"	44"	53"	62"
			7	1.7	27"	38"	48"	58"	68"
			10	2.0	29"	43"	53"	64"	73"
120°	564. 847. 17. BC	2	3	1.1	34"	45"	56"	66"	75"
			5	1.4	36"	49"	62"	72"	82"
			7	1.7	40"	54"	67"	79"	90"
			10	2.0	44"	60"	73"	86"	—
140°	564. 848. 17. BC	3	3	1.1	41"	57"	72"	85"	—
			5	1.4	50"	66"	82"	—	—
			7	1.7	56"	74"	92"	—	—
			10	2.0	65"	84"	—	—	—
90°	564. 916. 17. BC	4	3	1.7	23"	31"	39"	47"	56"
			5	2.1	27"	36"	45"	54"	63"
			7	2.5	29"	39"	50"	60"	70"
			10	2.9	31"	42"	54"	65"	76"
120°	564. 917. 17. BC	5	3	1.7	38"	49"	60"	70"	81"
			5	2.1	43"	57"	69"	81"	93"
			7	2.5	48"	64"	79"	93"	—
			10	2.9	56"	71"	86"	100"	—
140°	564. 918. 17. BC	6	3	1.7	50"	62"	74"	86"	—
			5	2.1	60"	73"	87"	—	—
			7	2.5	65"	78"	92"	—	—
			10	2.9	—	—	—	—	—
90°	564. 946. 32. BC	7	3	2.1	24"	33"	41"	50"	58"
			5	2.6	27"	37"	48"	58"	68"
			7	3.0	29"	40"	52"	63"	73"
			10	3.5	32"	44"	57"	69"	80"
120°	564. 947. 32. BC	8	3	2.1	45"	60"	76"	90"	—
			5	2.6	50"	66"	84"	98"	—
			7	3.0	54"	71"	90"	—	—
			10	3.5	59"	78"	100"	—	—
140°	564. 948. 32. BC	9	3	2.1	54"	67"	80"	—	—
			5	2.6	62"	75"	88"	—	—
			7	3.0	—	—	—	—	—
			10	3.5	—	—	—	—	—

¹ We reserve the right to supply material 316Ti or 316L under material no. 17.

Conversion formula for this series: $\dot{V}_2 = \dot{V}_1 \cdot \sqrt{\frac{p_2}{p_1}}$