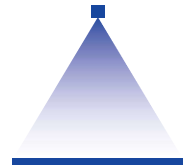


# Flat Fan Nozzle Tips

## Series 672/673



### Features:

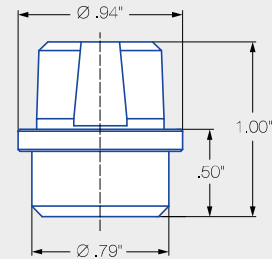
- Socket alignment flats

### Applications:

- Cooling
- Lubricating



Series 672/673



Nozzle Angle	Ordering number	Width—in. (B)	
		10"	20"
20°	672.561-672.921	3	7
	672.961-673.121	4	8
30°	672.562-672.962	5	11
	673.012 -673.122	6	12
45°	672.563-672.963	8	17
	672.013-673.123	9	19
60°	672.564-673.124	13	25
90°	672.566-672.766	18	34
	672.806-672.886	19	36
	672.926-672.966	21	40
	673.016		
140°	672.567-672.677	27	51
	672.727	29	54
	672.767	30	55
	672.807-672.927	31	57
	673.047-673.127	49	85

Ordering number									Equivalent bore diameter (in.)	V̇ water [gal/min]						
Type						Material number				p [psi]						
						16	17 <sup>1</sup>	30								
Spray Angle						303 SS	316 SS	Brass								
						20°	30°	45°	60°	90°	120°	16	17	30	10 psi	20 psi
672.561	672.562	672.563	672.564	672.566	672.567	-	●	-	.079	.39	.55	2.5	.78	.95	1.1	1.2
672.601	672.602	672.603	672.604	672.606	672.607	-	●	-	.087	.49	.69	3.2	.98	1.2	1.4	1.5
672.641	672.642	672.643	672.644	672.646	672.647	-	●	-	.099	.62	.88	4	1.24	1.52	1.75	1.96
672.671	672.672	672.673	672.674	672.676	672.677	-	●	-	.106	.74	1.04	4.75	1.47	1.80	2.08	2.33
672.721	672.722	672.723	672.724	672.726	672.727	-	●	-	.118	.98	1.38	6.3	1.95	2.39	2.76	3.09
672.761	672.762	672.763	672.764	672.766	672.767	-	●	-	.137	1.24	1.75	8	2.48	3.04	3.51	3.92
672.801	672.802	672.803	672.804	672.806	672.807	-	●	-	.157	1.55	2.19	10	3.10	3.80	4.39	4.90
672.841	672.842	672.843	672.844	672.846	672.847	-	●	-	.177	1.94	2.75	12.5	3.88	4.75	5.48	6.13
672.881	672.882	672.883	672.884	672.886	672.887	-	●	-	.197	2.48	3.51	16	4.96	6.08	7.02	7.85
672.921	672.922	672.923	672.924	672.926	672.927	-	●	-	.220	3.10	4.39	20	6.20	7.60	8.77	9.81
672.961	672.962	672.963	672.964	673.016		-	●	-	.236	3.88	5.48	25	7.75	9.50	10.9	12.2
673.041	673.042	673.043	673.044	673.046	673.047	●	-	●	.315	6.20	8.77	40	12.4	15.2	17.5	19.6
673.081	673.082	673.083	673.084	673.086		●	-	●	.354	7.75	10.9	50	15.5	18.9	21.9	24.5
673.121	673.122	673.123	673.124	673.126	673.127	●	-	●	.394	9.77	13.8	63	19.5	23.9	27.6	30.9

<sup>1</sup> We reserve the right to supply material 316Ti or 316L under material no. 17.

Conversion formula for this series:  $\dot{V}_2 = \dot{V}_1 \cdot \sqrt{\frac{P_2}{P_1}}$

Ordering	Type	+	Material no.	=	Ordering no.
example:	672.721	+	17	=	672.721.17



**Series 672/673 bases, caps and accessories**

Ordering number		Description	Material No.	
			17 <sup>1</sup>	30
Type			316 SS	Brass
Bases	067. 210. xx. 01	Weld Base, 1.06" long	●	
	067. 210. xx. 02	Weld Base, 1.37" long	●	
	067. 210. xx. 03	Weld Base, 1.67" long	●	
	067. 211. xx. 04	Weld Base, 2.37" long	●	
	067. 211. xx. 06	Weld Base, 4.92" long	●	
	067. 211. xx. 11	Weld Base, 7.08" long	●	
	067. 211. xx. 13	Weld Base, 3.94" long	●	
	067. 216. xx. BK	Threaded, 3/4" NPT Male, 1.75" long	●	
Caps	065. 600. xx. 00	Nozzle Tip Retainer Cap	●	●
Accessories	006. 721. xx. 00	Alignment Tip — Right Hand		●
	006. 722. xx. 00	Alignment Tip — Left Hand		●
	006. 723. xx. 00	Alignment Tip — Center		●

<sup>1</sup> We reserve the right to supply material 316Ti or 316L under material no. 17.  
 Other base options are available.  
 Please contact Lechler for more information.

